



Parent Payments & Book List 2024

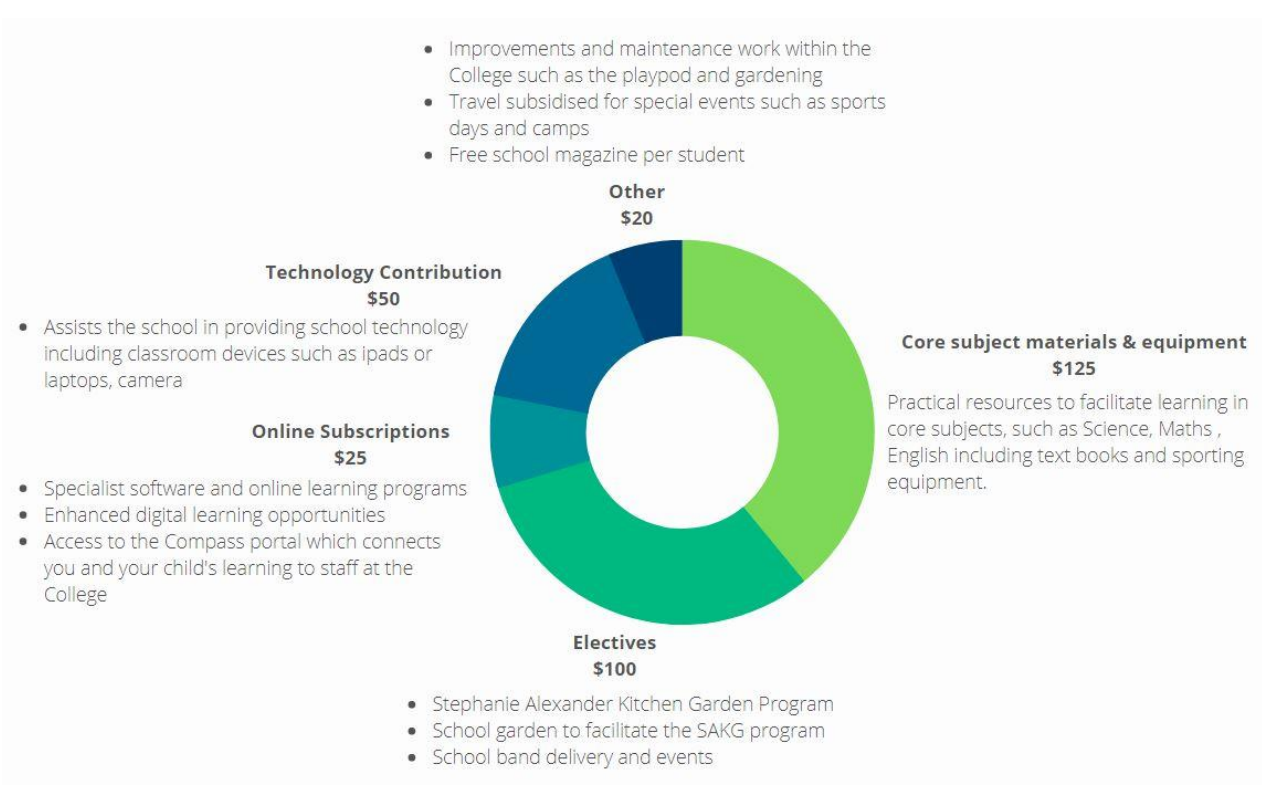
Grade Prep to 6

Dear Parent/Guardian,

Apollo Bay P-12 College is looking forward to another great year of teaching and learning and would like to advise you of our College's voluntary financial contributions for 2024.

Schools provide students with free instruction to fulfil the standard curriculum requirements and we want to assure you that all contributions are voluntary. **Nevertheless, the ongoing support of our families ensures that our school can offer the best possible education and support for our students.** We want to thank you for all your support, whether it is through financial contributions, fundraising, or volunteering your time at school. This makes a huge difference to our school and the programs we can offer.

Within our school, financial contributions allow us to provide the following:



Support from parents connected with the College continues to enable us to provide an outstanding P-12 curriculum program for our students from Year Prep to 12 and ultimately, continue to foster positive outcomes for our students.

For further information on the Department's Parent Payments Policy please see overview attached at the end of this document.

Yours sincerely,

Brian Humphries
Principal

Dan Holthouse
College Council President

Parent Payments – Grade Prep to 6

There are 2 columns listed below:

Recommended amount – An indicative amount of what we spend per student to provide this resource or subject

Contribution amount – The amount you are willing to contribute towards this resource or subject

Student Name: _____

2024 Year Level: _____

Curriculum Contributions - items and activities that students use, or participate in, to access the Curriculum	Recommended Amount	Contribution Amount
Core Subject Materials & Equipment <ul style="list-style-type: none"> Science – chemicals, practical consumables, poster paper Mathematics – numeracy blocks, hands-on learning equipment English – book boxes, classroom texts, readers Sports – equipment for play during breaks 	\$ 125	
Subject Specific Materials & Equipment <ul style="list-style-type: none"> STEM: batteries, electrical circuits, experiment consumables Music: musical equipment access, sheet music, instrument upkeep Art: materials such as paint, clay, paper, brushes, fabric, thread Kitchen Garden: kitchen staples, garden materials and equipment, chicken upkeep Library: tubs and trolleys, software, bookshelves, contact sheets, cataloguing equipment 	\$ 100	
Online Subscriptions <ul style="list-style-type: none"> Mathletics or Maths 300 \$10 Reading Eggs \$15 Compass 	\$ 25	
Technology Contribution This Technology Contribution assists with the cost of technology in the school including classroom devices such as laptops and iPads – hardware, software, digital learning devices (i.e., digital cameras, classroom screens, projectors, other ICT equipment).	\$ 50	
TOTAL – CURRICULUM CONTRIBUTIONS (where all selected)	\$300	
Other Contributions Total - for non/extra-curriculum items and activities	\$120	
Facilities Contribution - School grounds maintenance and improvements	\$ 20	
Optional - Musical Instrument Hire (if student is in the instrumental band)	\$ 100	
TOTAL – including 'Other Contributions'	\$420	
If paying in person at the General Office, please bring this sheet with you.		

Booklist – Grade Prep to 6

To reduce costs to families and improve environmental sustainability by reducing wastage, stationery materials are bulk ordered on behalf of students and made available via the classroom. Class sets are provided for any text books and ICT equipment that is required for use at school by students funded through voluntary parent contributions.

Book List & Stationery (Prep to Y6) - 2024	\$50.00
---	----------------

Your Book List contribution provides the following resources for your child:

- Handy pouches and document wallet
- Student diary
- Project book
- Class set of maths resources including calculators
- USB stick

Additional Items – Student to Supply

We kindly ask that you bring along reading pouches for reuse if possible, and if your child is in Year 3 or above, please bring along a pencil case as well.

Events – Camps & Excursions

We have listed the major camps offered in Grade Prep to 6 to help you plan ahead. Please note that smaller camps/excursions may be held throughout the year with smaller associated costs. All camps are extra-curricular activities which we encourage your child to attend.

Camps and excursions are provided in addition to the standard curriculum program on a user-pays basis. If parents/guardians choose to access these activities for students, they will be required to pay the requested amount.

All information about events is communicated via the Compass portal. Consent forms and payments are also managed through Compass. Any events requiring action will be visible when you are logged in to Compass and you will also be notified via email when consent and/or payment is due. *Note - camps and prices listed below are subject to change.*

Year Level	Location	Approximate dates	Approximate cost
Year 2	School, Sleepover	Term 4	\$25
Year 3	Bimbi Park, Cape Otway	Term 4	\$55
Year 4	Kangarooie, Princetown	Term 4	\$270
Year 5	Sovereign Hill, Ballarat	Term 3	\$275
Year 6	Melbourne City	Term 3	\$180
	Year 6 Celebration Day	Term 4	\$30

Support for Families

Apollo Bay P-12 College understands that some families may experience financial difficulty and offers a range of support options, including:

- **Camps, Sports and Excursions Fund (CSEF)** – please note there is a maximum of \$125 applicable for primary students and \$225 for secondary students per year
- **Centrelink** – Payments on a fortnightly basis
- **State Schools Relief (SSR)** for uniform and other items
- **Payment plans** for extra-curricular items and activities

For a confidential discussion about accessing these services, or if you would like to discuss alternative payment arrangements, contact our Business Manager Lauren Nicholls on 5237 6483 or Lauren.Nicholls3@education.vic.gov.au.

Payment Methods

- **Pay directly at the office** in cash or Visa/Mastercard/EFTPOS
- **Direct Deposit** into the school bank account:
 - **BSB:** 063 629
 - **Account Name:** Apollo Bay P-12 College Council
 - **Account Number:** 1001 0660
(please use your 'Surname' and details such as 'Parent Payment', 'Booklist' etc in the reference)
- **Compass** – flexible payment options are available for Parent Payments including instalments & customisable charges.
- **Centrepay** – only available to holders of Centrelink Benefit Cards, to be arranged by the card holder directly through Centrelink (CRN 555 056 147X)

Refunds

Parent/Guardian requests for refunds are subject to the discretion of the school and are made on a case-by-case basis. Refunds will be provided where the school deems it reasonable and fair to do so, taking into consideration whether a cost has been incurred, the Department Parent Payment Policy and Guidance, and other relevant information.

Parent Payment Policy

Overview



FREE INSTRUCTION

- Schools provide students with free instruction and ensure students have free access to all items, activities and services that are used by the school to fulfil the standard curriculum requirements in Victorian Curriculum F-10, VCE and VCAL.
- Schools may invite parents to make a financial contribution to support the school.



PARENT PAYMENT REQUESTS

Schools can request contributions from parents under three categories:

Curriculum Contributions

Voluntary financial contributions for curriculum items and activities which the school deems necessary for students to learn the Curriculum.

Other Contributions

Voluntary financial contributions for non-curriculum items and activities that relate to the school's functions and objectives.

Extra-Curricular Items and Activities

Items and activities that enhance or broaden the schooling experience of students and are above and beyond what the school provides for free to deliver the Curriculum. These are provided on a user-pays basis.

- Schools may also invite parents to supply or purchase educational items to use and own (e.g. textbooks, stationery, digital devices).



FINANCIAL HELP FOR FAMILIES

- Schools put in place financial hardship arrangements to support families who cannot pay for items or activities so that their child doesn't miss out.
- Schools have a nominated parent payment contact person(s) that parents can have a confidential discussion with regarding financial hardship arrangements.



SCHOOL PROCESSES

- Schools must obtain school council approval for their parent payment arrangements and publish all requests and communications for each year level on their school website for transparency.